



## Plan Report for OCFL-2025-Arias-1

<b>Plan Name:</b>	OCFL-2025-Arias-1
<b>Date Submitted:</b>	April 9 <sup>th</sup> , 2025
<b>Sponsored by:</b>	Mark Arias – MRAC Committee Member – District 3

<b>Maximum Deviation</b>	Meets the requirement – 8.63%
--------------------------	-------------------------------

<b>Incumbents</b>	Incumbents not in their district: 4, 5, 6 D6 incumbent is now in D4; D5 and D6 do not have incumbents, D4 incumbent is in D7; D8 has D5 incumbent
<b>Preservation of the Core of Current Districts</b>	D1, 2, and 3

<b>Contiguity</b>	All Districts are contiguous
-------------------	------------------------------

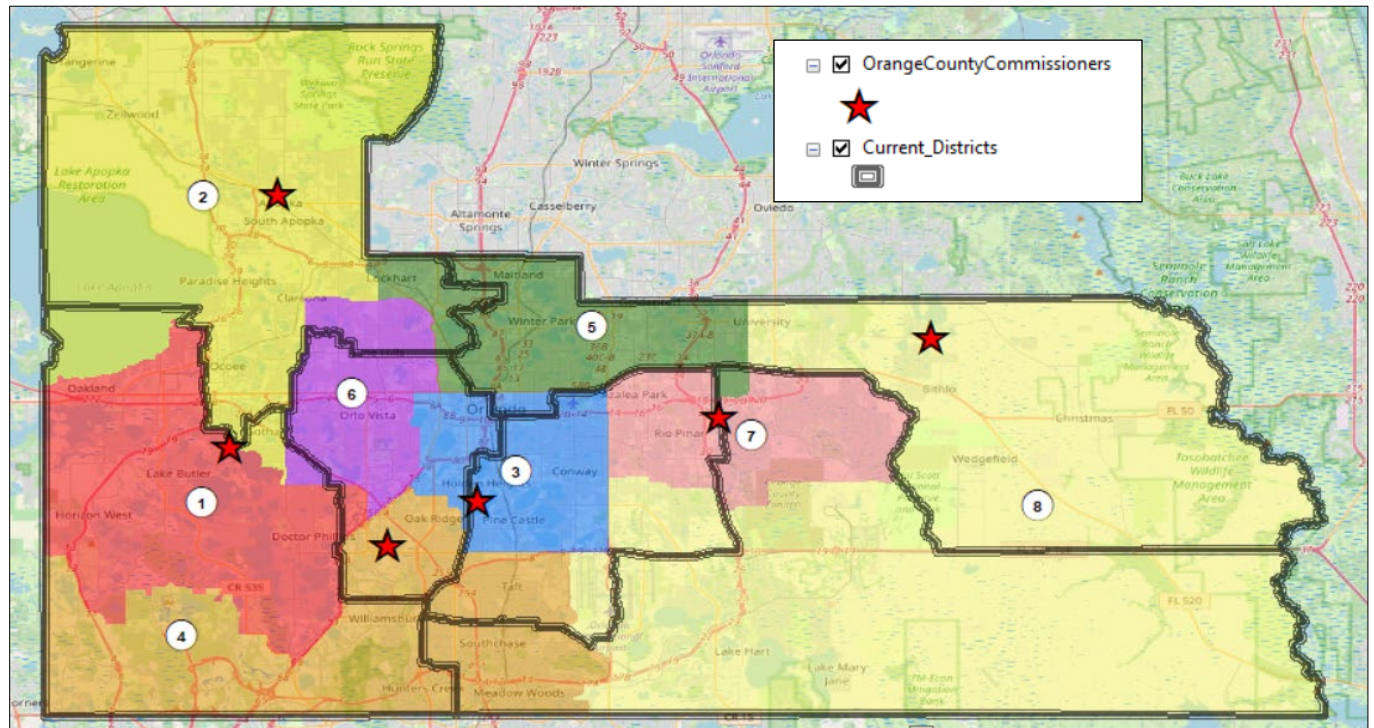
<b>Majority/Plurality</b>	NH-White - 1, 2, 3, 5, 8 Hispanic – 4, 7 NH-Black – 6
---------------------------	-------------------------------------------------------------

<b>Compactness</b>	All Districts are fairly compact
--------------------	----------------------------------

<b>Communities of Interest (Municipalities)</b>	2 out of 13 Municipalities are split.  Belle Isle and Orlando are split by districts
<b>Communities of Interest (CDPs)</b>	4 Out of 39 CDPs are split. Part of 2 CDPs are within the County (Four Corners in the South Western part of the County and Goldenrod in the northern part of the County)  Horizon West, Lake Butler, Meadow Woods, and Oak Ridge are split

<b>Precincts</b>	16 Precincts have been split: 106, 212, 318, 341, 344, 345, 402, 415, 420, 438, 548, 618, 623, 632, 636, 916
------------------	--------------------------------------------------------------------------------------------------------------

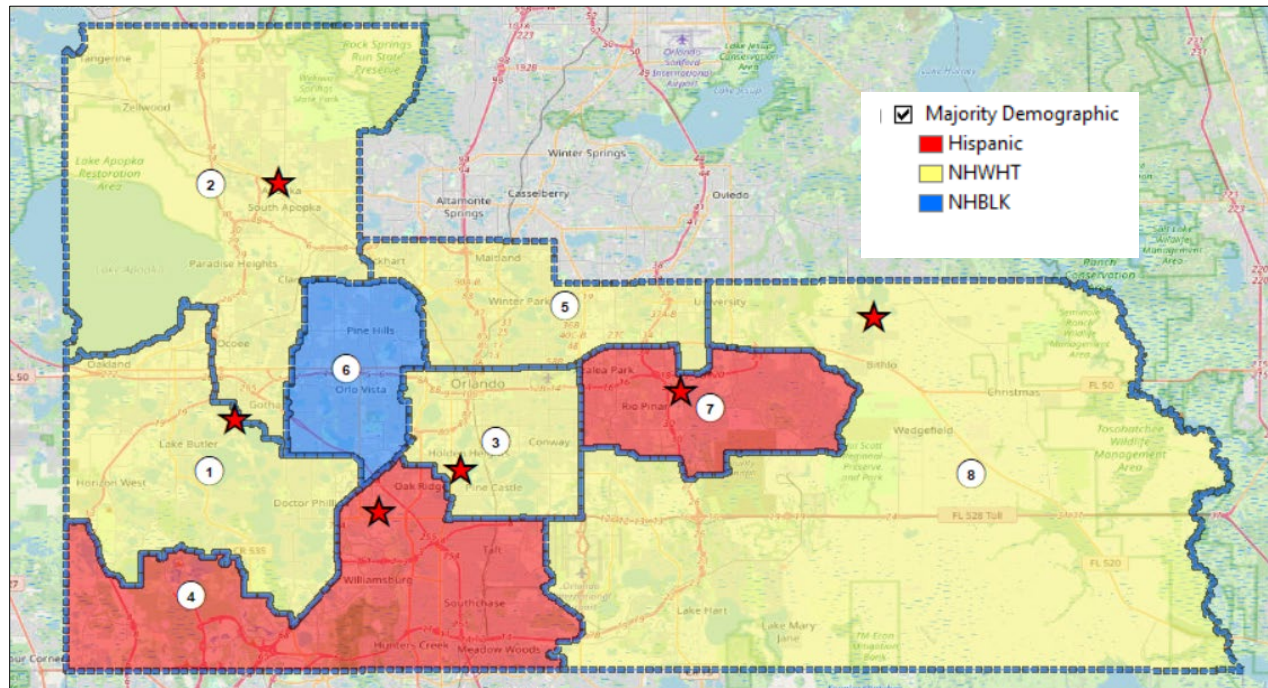
## Overview Map – Proposed & Current Districts



### Total Population

DISTRICT	Hispanic	NH- WHITE	NH- BLACK	NH-AIAN	NH- ASIAN	NH- NHOPI	NH- OTHER	NH- MORE THAN 2 RACES	TOTAL
1	35,737	92,823	12,899	247	15,376	120	2,541	12,809	172,552
	20.71%	53.79%	7.48%	0.14%	8.91%	0.07%	1.47%	7.42%	100.00%
2	45,477	69,388	39,177	354	6,735	96	1,808	7,316	170,351
	26.70%	40.73%	23.00%	0.21%	3.95%	0.06%	1.06%	4.29%	100.00%
3	55,678	67,691	41,810	289	4,828	141	1,260	6,378	178,075
	31.27%	38.01%	23.48%	0.16%	2.71%	0.08%	0.71%	3.58%	100.00%
4	92,934	42,888	23,188	242	11,730	298	2,262	7,293	180,835
	51.39%	23.72%	12.82%	0.13%	6.49%	0.16%	1.25%	4.03%	100.00%
5	45,045	101,903	19,698	278	9,374	103	1,358	8,009	185,768
	24.25%	54.85%	10.60%	0.15%	5.05%	0.06%	0.73%	4.31%	100.00%
6	39,170	30,061	94,028	319	7,075	120	3,633	10,151	184,557
	21.22%	16.29%	50.95%	0.17%	3.83%	0.07%	1.97%	5.50%	100.00%
7	90,994	56,068	17,400	242	10,900	124	1,570	6,369	183,667
	49.54%	30.53%	9.47%	0.13%	5.93%	0.07%	0.85%	3.47%	100.00%
8	67,990	70,540	15,424	236	10,852	112	1,583	7,366	174,103
	39.05%	40.52%	8.86%	0.14%	6.23%	0.06%	0.91%	4.23%	100.00%

## Majority/Plurality Map

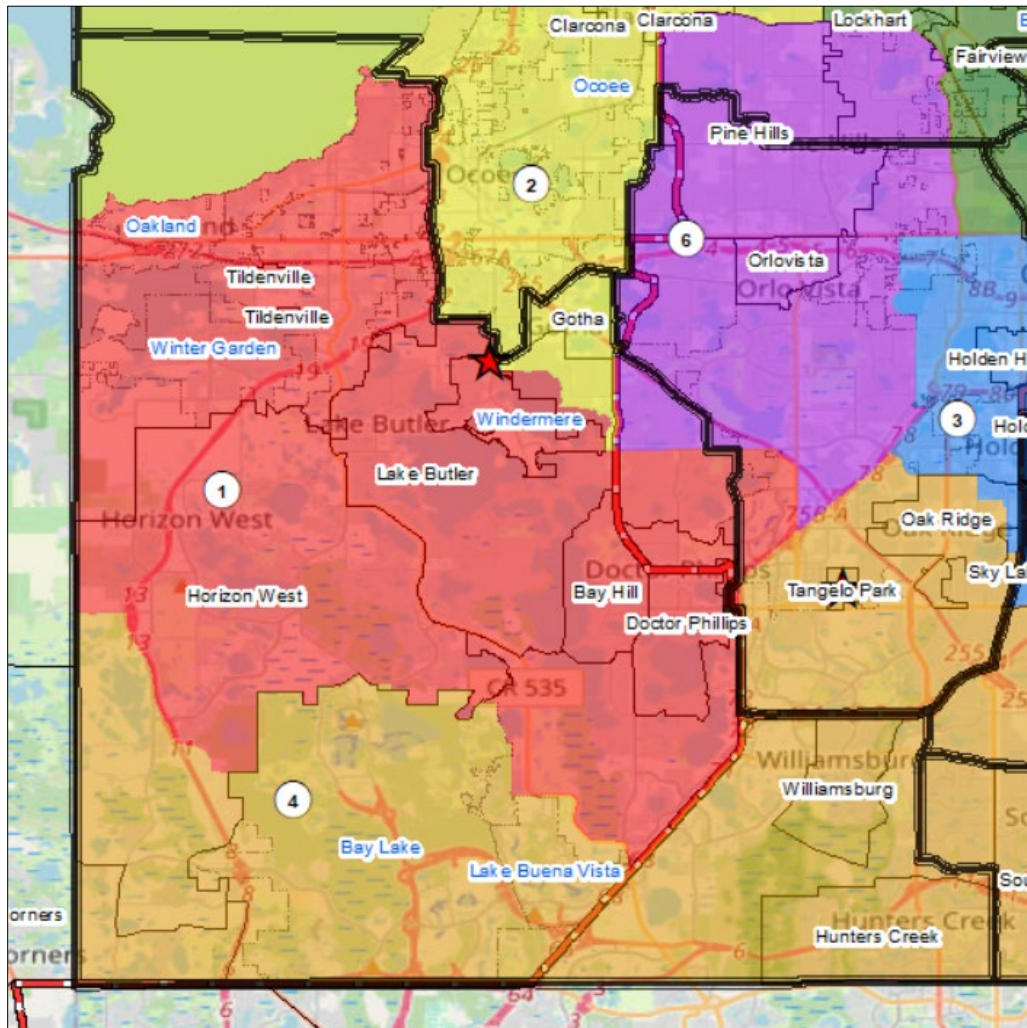


### Voting Age Population

DISTRICT	Hispanic	NH- WHITE	NH- BLACK	NH-AIAN	NH- ASIAN	NH- NHOPI	NH- OTHER	NH- MORE THAN 2 RACES	TOTAL
1	25,379	72,672	9,658	183	11,786	89	1,734	8,047	129,548
	19.59%	56.10%	7.46%	0.14%	9.10%	0.07%	1.34%	6.21%	100.00%
2	31,755	57,291	28,743	287	5,436	77	1,257	4,873	129,719
	24.48%	44.17%	22.16%	0.22%	4.19%	0.06%	0.97%	3.76%	100.00%
3	42,497	59,650	31,400	239	4,205	125	935	4,637	143,688
	29.58%	41.51%	21.85%	0.17%	2.93%	0.09%	0.65%	3.23%	100.00%
4	70,664	35,963	17,143	197	9,457	253	1,586	5,186	140,449
	50.31%	25.61%	12.21%	0.14%	6.73%	0.18%	1.13%	3.69%	100.00%
5	34,557	87,234	15,237	221	7,787	88	1,030	5,621	151,775
	22.77%	57.48%	10.04%	0.15%	5.13%	0.06%	0.68%	3.70%	100.00%
6	29,097	25,734	67,826	257	5,934	99	2,801	7,436	139,184
	20.91%	18.49%	48.73%	0.18%	4.26%	0.07%	2.01%	5.34%	100.00%
7	68,229	46,058	13,228	188	8,704	103	1,041	4,200	141,751
	48.13%	32.49%	9.33%	0.13%	6.14%	0.07%	0.73%	2.96%	100.00%
8	51,185	60,219	12,774	197	8,936	91	1,161	5,121	139,684
	36.64%	43.11%	9.14%	0.14%	6.40%	0.07%	0.83%	3.67%	100.00%



## District 1



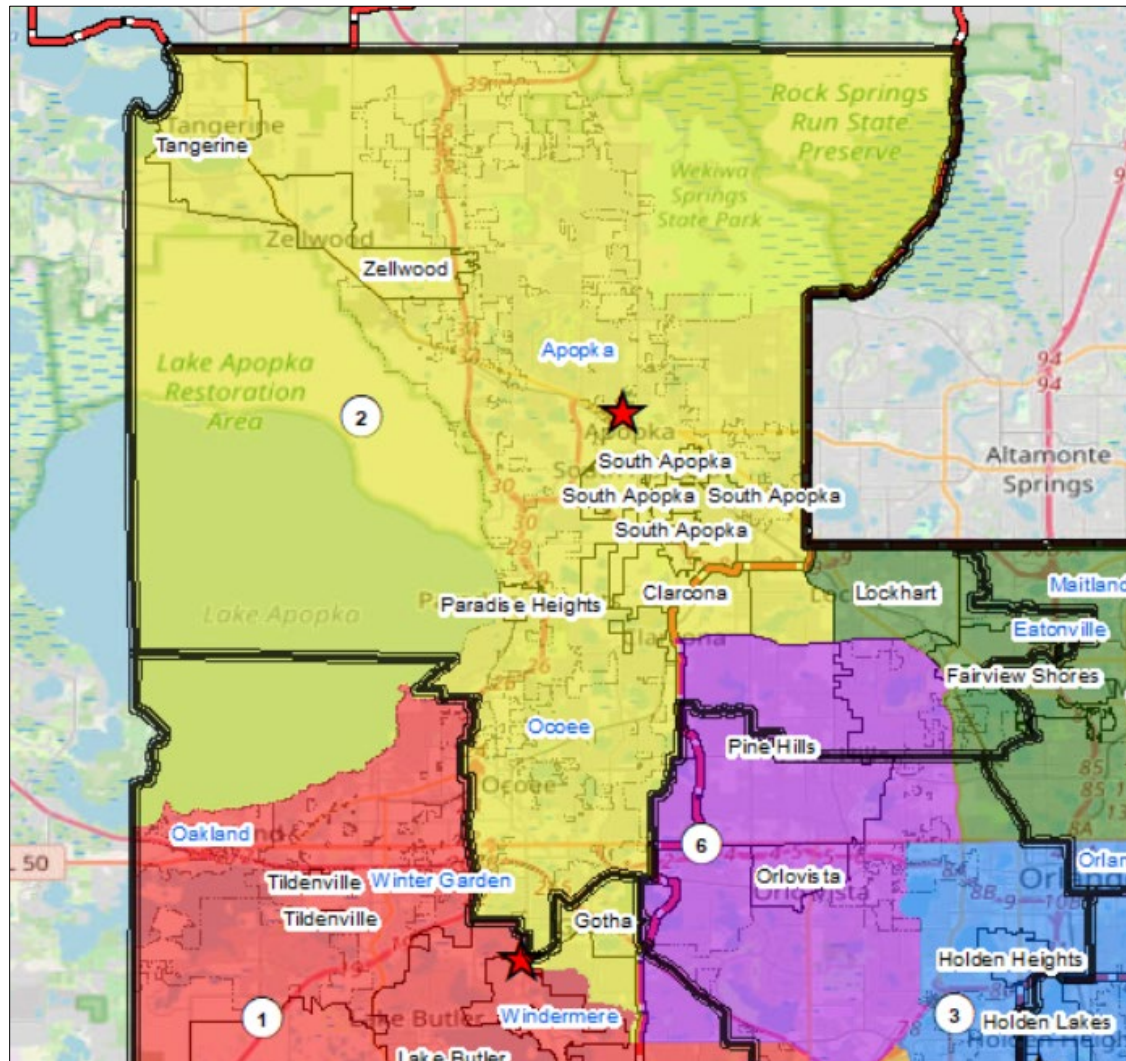
### Total Population

DISTRICT	Hispanic	NH- WHITE	NH- BLACK	NH- AIAN	NH- ASIAN	NH- NHOP	NH- OTHER	NH- MORE THAN 2	TOTAL
1	35,737	92,823	12,899	247	15,376	120	2,541	12,809	172,552
	20.71%	53.79%	7.48%	0.14%	8.91%	0.07%	1.47%	7.42%	100.00%

### Voting Age Population

1	25,379	72,672	9,658	183	11,786	89	1,734	8,047	129,548
	19.59%	56.10%	7.46%	0.14%	9.10%	0.07%	1.34%	6.21%	100.00%

## District 2



### Total Population

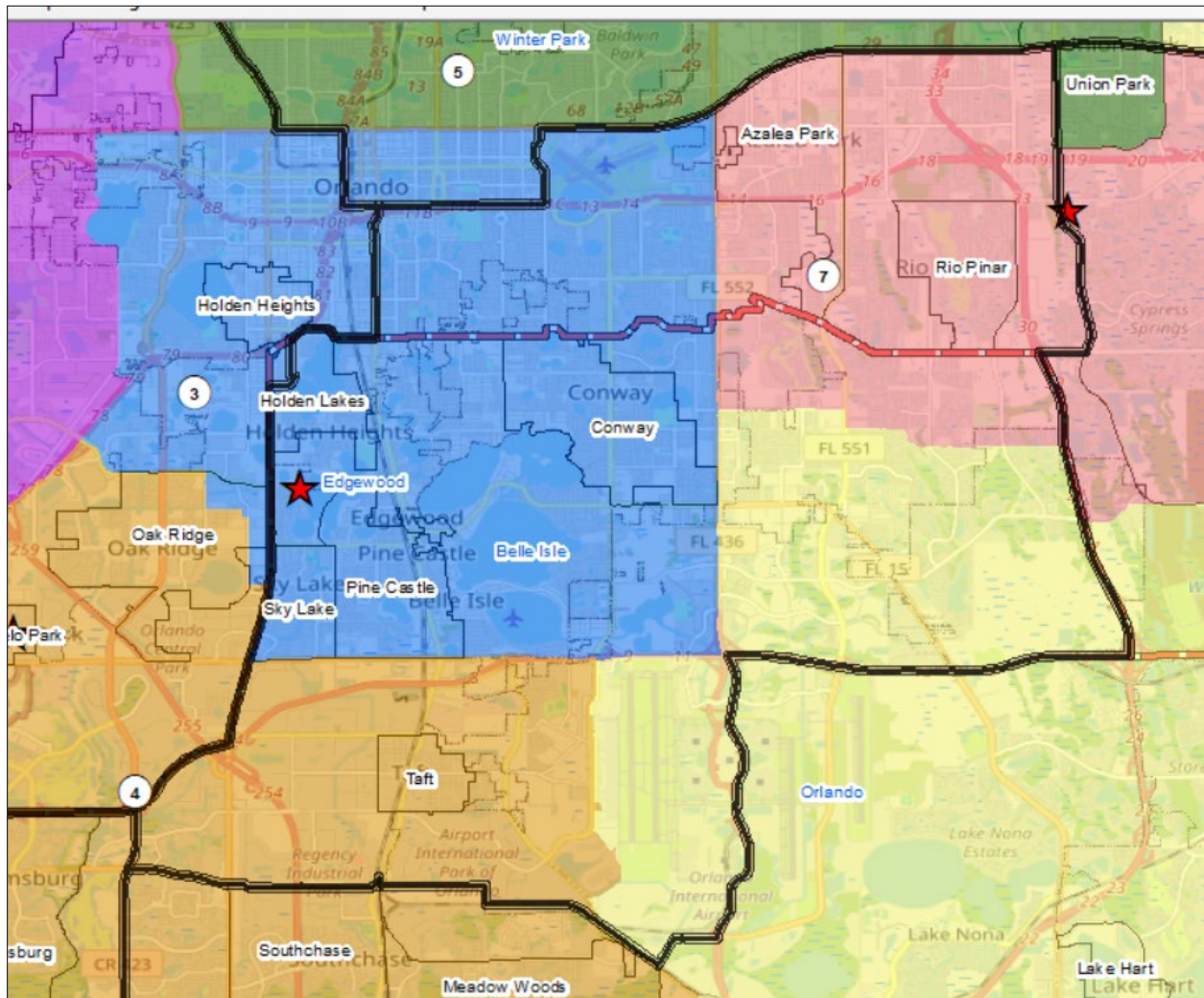
DISTRICT	Hispanic	NH- WHITE	NH- BLACK	NH-AIAN	NH- ASIAN	NH- NHOPI	NH- OTHER	NH- MORE THAN 2	TOTAL
2	45,477	69,388	39,177	354	6,735	96	1,808	7,316	170,351
	26.70%	40.73%	23.00%	0.21%	3.95%	0.06%	1.06%	4.29%	100.00%

### Voting Age Population

2	31,755	57,291	28,743	287	5,436	77	1,257	4,873	129,719
	24.48%	44.17%	22.16%	0.22%	4.19%	0.06%	0.97%	3.76%	100.00%



## District 3



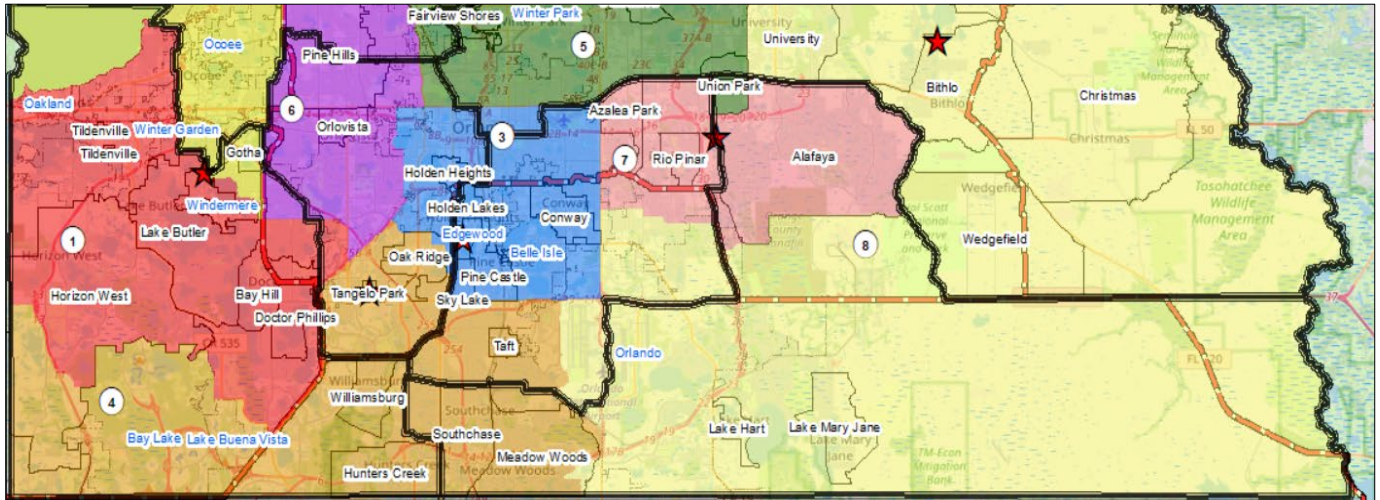
### Total Population

DISTRICT	Hispanic	NH- WHITE	NH- BLACK	NH-AIAN	NH- ASIAN	NH- NHOPI	NH- OTHER	NH- MORE THAN 2	TOTAL
3	55,678	67,691	41,810	289	4,828	141	1,260	6,378	178,075
	31.27%	38.01%	23.48%	0.16%	2.71%	0.08%	0.71%	3.58%	100.00%

### Voting Age Population

3	42,497	59,650	31,400	239	4,205	125	935	4,637	143,688
	29.58%	41.51%	21.85%	0.17%	2.93%	0.09%	0.65%	3.23%	100.00%

## District 4



### Total Population

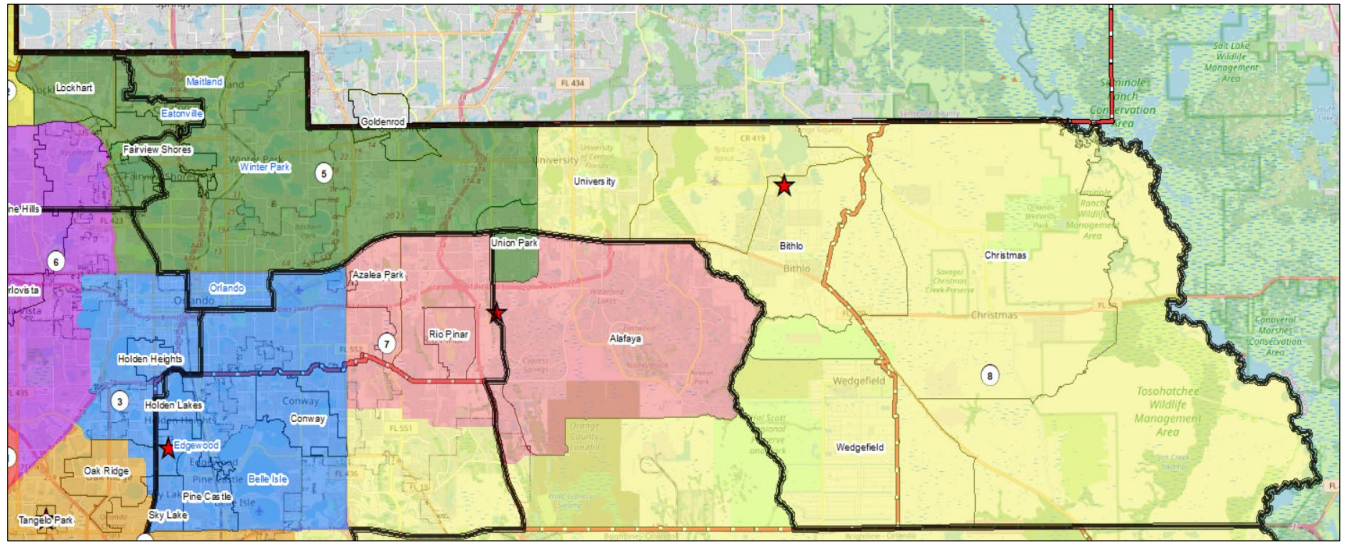
DISTRICT	Hispanic	NH- WHITE	NH- BLACK	NH- AIAN	NH- ASIAN	NH- NHPI	NH- OTHER	NH- MORE THAN 2	TOTAL
4	92,934	42,888	23,188	242	11,730	298	2,262	7,293	180,835
	51.39%	23.72%	12.82%	0.13%	6.49%	0.16%	1.25%	4.03%	100.00%

### Voting Age Population

4	70,664	35,963	17,143	197	9,457	253	1,586	5,186	140,449
	50.31%	25.61%	12.21%	0.14%	6.73%	0.18%	1.13%	3.69%	100.00%

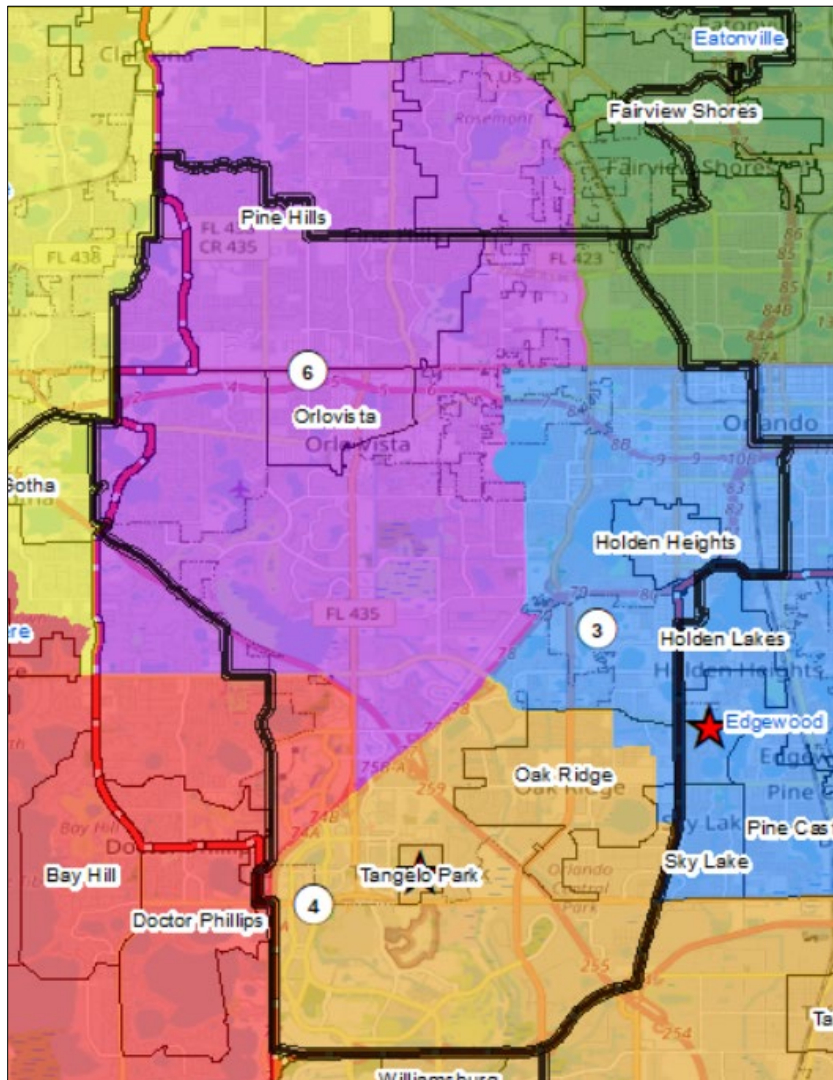


## District 5



Total Population									
DISTRICT	Hispanic	NH- WHITE	NH- BLACK	NH-AIAN	NH- ASIAN	NH- NHPI	NH- OTHER	NH- MORE THAN 2	TOTAL
5	45,045	101,903	19,698	278	9,374	103	1,358	8,009	185,768
	24.25%	54.85%	10.60%	0.15%	5.05%	0.06%	0.73%	4.31%	100.00%
Voting Age Population									
5	34,557	87,234	15,237	221	7,787	88	1,030	5,621	151,775
	22.77%	57.48%	10.04%	0.15%	5.13%	0.06%	0.68%	3.70%	100.00%

## District 6



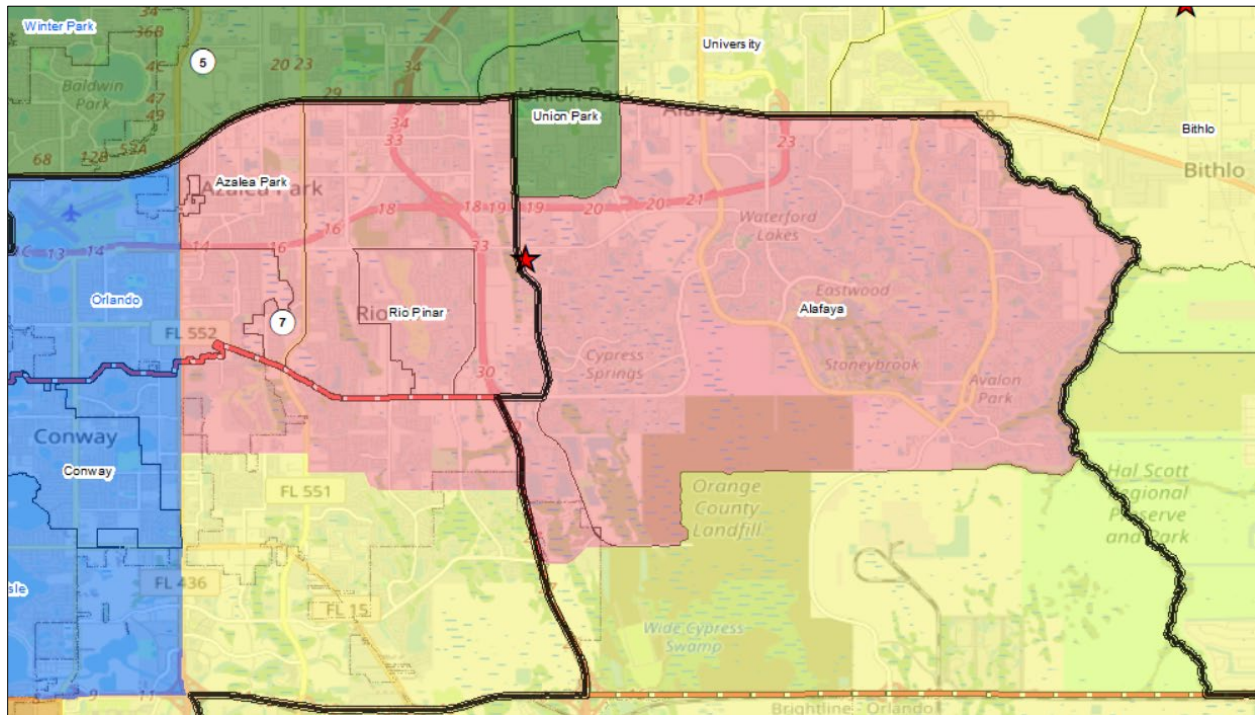
### Total Population

DISTRICT	Hispanic	NH- WHITE	NH- BLACK	NH-AIAN	NH- ASIAN	NH- NHOP	NH- OTHER	NH- MORE THAN 2	TOTAL
6	39,170	30,061	94,028	319	7,075	120	3,633	10,151	184,557
	21.22%	16.29%	50.95%	0.17%	3.83%	0.07%	1.97%	5.50%	100.00%

### Voting Age Population

6	29,097	25,734	67,826	257	5,934	99	2,801	7,436	139,184
	20.91%	18.49%	48.73%	0.18%	4.26%	0.07%	2.01%	5.34%	100.00%

## District 7



### Total Population

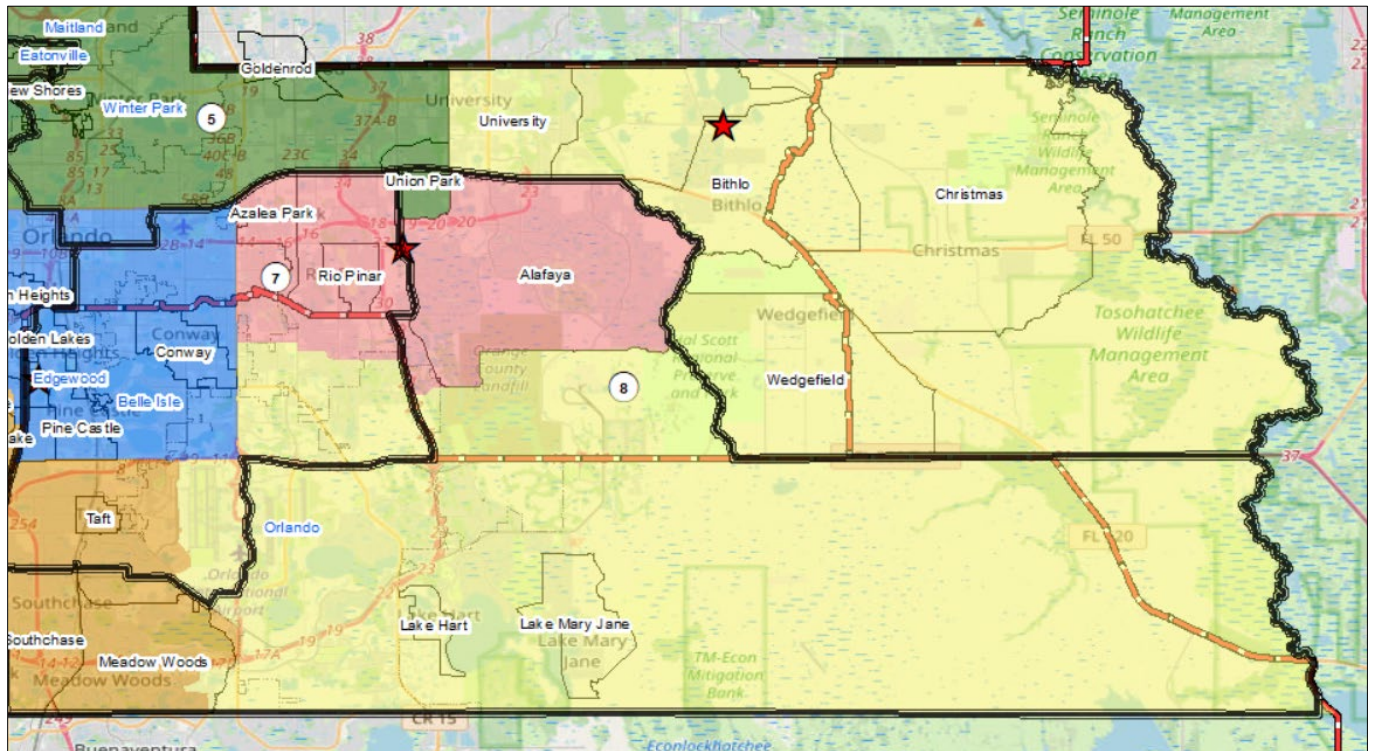
DISTRICT	Hispanic	NH- WHITE	NH- BLACK	NH-AIAN	NH- ASIAN	NH- NHOP	NH- OTHER	NH- MORE THAN 2	TOTAL
7	90,994	56,068	17,400	242	10,900	124	1,570	6,369	183,667
	49.54%	30.53%	9.47%	0.13%	5.93%	0.07%	0.85%	3.47%	100.00%

### Voting Age Population

7	68,229	46,058	13,228	188	8,704	103	1,041	4,200	141,751
	48.13%	32.49%	9.33%	0.13%	6.14%	0.07%	0.73%	2.96%	100.00%



## District 8



### Total Population

DISTRICT	Hispanic	NH-WHITE	NH-BLACK	NH-AIAN	NH-ASIAN	NH-NHOPI	NH-OTHER	NH-MORE THAN 2	TOTAL
8	67,990	70,540	15,424	236	10,852	112	1,583	7,366	174,103
	39.05%	40.52%	8.86%	0.14%	6.23%	0.06%	0.91%	4.23%	100.00%

### Voting Age Population

8	51,185	60,219	12,774	197	8,936	91	1,161	5,121	139,684
	36.64%	43.11%	9.14%	0.14%	6.40%	0.07%	0.83%	3.67%	100.00%